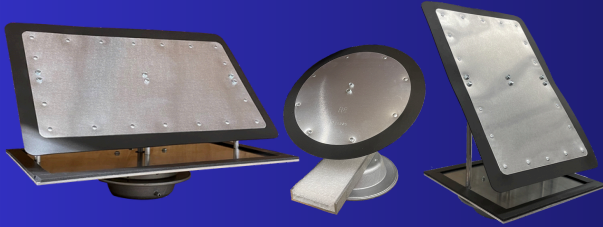


# The **Arzel Zoning** TECHNOLOGY Damper Line



## EzySlide® Dampers

Our standard dampers come in round and rectangular sizes. For retrofit applications, just cut a hole into the ductwork and insert the damper. It takes about 2 minutes per damper. With flex duct or new construction systems, you might want to order EzySlide dampers pre-installed in sleeves. Either way, you'll take advantage of a quicker install time and unbeatable quality.

**Our pneumatic dampers are different.** You don't have to run wiring to each damper, and you won't have to replace any damper motors. That's why we can offer **the industry's best warranty!**

*Scan to  
learn more*



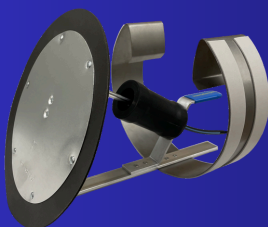
## EzyFit® Dampers

The EzyFit damper folds like a taco, so you can slip the damper through a register or around a corner. Great for finished basements or other areas where you have partial access to the ductwork.



## RegiDamper®

The RegiDamper is the answer when there is no access to the ductwork. It's installed directly beneath the floor register.



## InsertaDamper®

insertaDamper can be inserted around corners and in vertical ducts. A spring holds it firmly in place. Great for applications when the main trunk is accessible but the branches are not.