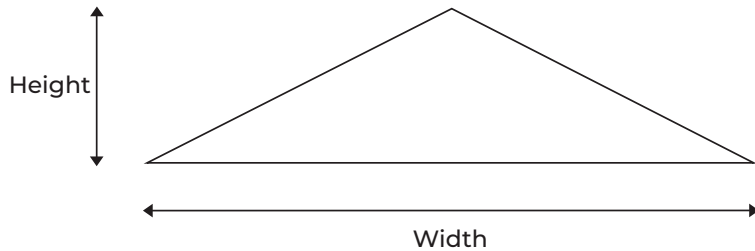


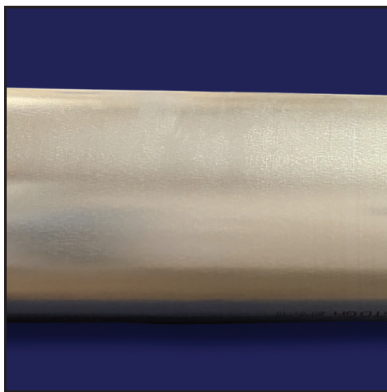
# Round BalancePro Installation Instructions

Round BalancePro dampers come with a template sticker that shows the triangle cutout you need to make in the duct. For reference, here's the cutout size and shape for each damper size.



## Cutout Size Chart

Damper Diameter	Width	Height
5"	6 3/4"	1 7/8"
6"	6 3/4"	1 7/8"
7"	8 3/4"	1 7/8"
8"	8 3/4"	1 7/8"
9"	10 3/4"	1 7/8"
10"	10 3/4"	1 7/8"
12"	12 3/4"	1 7/8"



1. Determine the mounting location and refer to the table for the cutout size

2. Fix your template to the mounting location

3. Cut the triangular shape on the duct

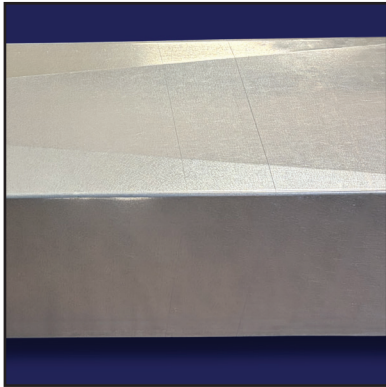


4. Insert BalancePro directly into opening

5. Align mounting rail along template and install screws

6. Adjust damper to desired position and tighten wing nut

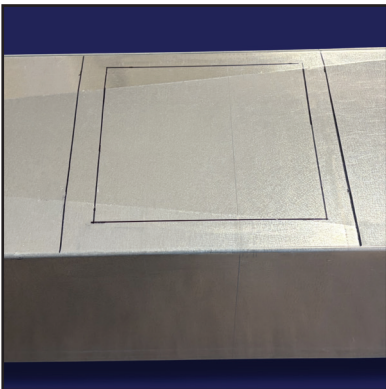
# Rectangular BalancePro Installation Instructions



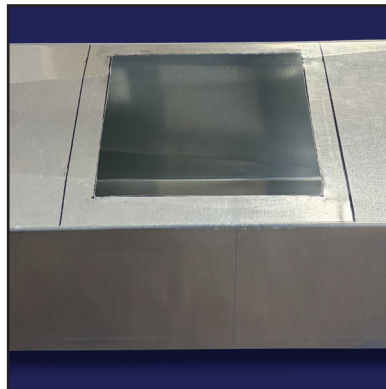
1. Determine the mounting location on the smaller side of the duct and refer to the table for the cutout size

<i>Part Number</i>	<i>BalancePro Size</i>	<i>Cutout Size</i>
STK-BLS08	8" x 8"	6.5" x 6.5"
STK-BLS10	10" x 10"	8.5" x 8.5"
STK-BLS12	12" x 12"	10.5" x 10.5"
STK-BLS810	8" x 10"	6.5" x 6.5"
STK-BLS812	8" x 12"	6.5" x 6.5"
STK-BLS814	8" x 14"	6.5" x 6.5"

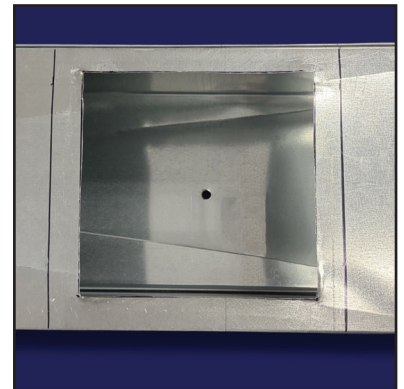
**Cutout Size = Shorter Damper Dimension - 1.5 inches**



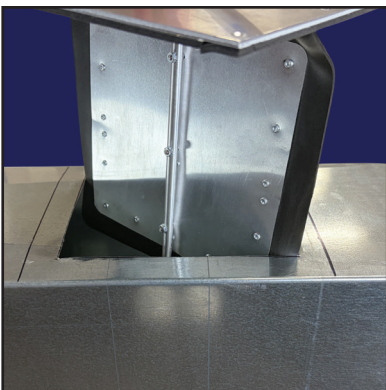
2. Mark the cutout shape on the duct



3. Cut square opening



4. Drill hole for BalancePro rod on opposite side directly in the center



5. Insert the damper into the cutout and pass the damper rod through the hole drilled in Step 4



6. Align mounting plate to duct and secure with screws



7. Adjust damper to desired position and tighten wing nut